



# CLLD7 Polyclonal Antibody

<b>Catalog No</b>	YP-Ab-16149
<b>Isotype</b>	IgG
<b>Reactivity</b>	Human;Mouse
<b>Applications</b>	WB;IHC;IF;ELISA
<b>Gene Name</b>	RCBTB1
<b>Protein Name</b>	RCC1 and BTB domain-containing protein 1
<b>Immunogen</b>	The antiserum was produced against synthesized peptide derived from human RCBTB1. AA range:251-300
<b>Specificity</b>	CLLD7 Polyclonal Antibody detects endogenous levels of CLLD7 protein.
<b>Formulation</b>	Liquid in PBS containing 50% glycerol, 0.5% BSA and 0.02% sodium azide.
<b>Source</b>	Polyclonal, Rabbit,IgG
<b>Purification</b>	The antibody was affinity-purified from rabbit antiserum by affinity-chromatography using epitope-specific immunogen.
<b>Dilution</b>	WB: 1/500 - 1/2000. IHC: 1/100 - 1/300. ELISA: 1/20000.. IF 1:50-200
<b>Concentration</b>	1 mg/ml
<b>Purity</b>	≥90%
<b>Storage Stability</b>	-20°C/1 year
<b>Synonyms</b>	RCBTB1; CLLD7; E4.5; RCC1 and BTB domain-containing protein 1; Chronic lymphocytic leukemia deletion region gene 7 protein; CLL deletion region gene 7 protein; Regulator of chromosome condensation and BTB domain-containing protein 1
<b>Observed Band</b>	58kD
<b>Cell Pathway</b>	Nucleus .
<b>Tissue Specificity</b>	Ubiquitously expressed (PubMed:11306461, PubMed:27486781). In the retina, present in the nerve fiber layer and to a lesser extent in the inner and outer plexiform layers (at protein level) (PubMed:27486781).
<b>Function</b>	function:May be involved in cell cycle regulation by chromatin remodeling.,similarity:Contains 1 BTB (POZ) domain.,similarity:Contains 2 BTB (POZ) domains.,similarity:Contains 6 RCC1 repeats.,tissue specificity:Ubiquitously expressed.,
<b>Background</b>	This gene encodes a protein with an N-terminal RCC1 domain and a C-terminal BTB (broad complex, tramtrack and bric-a-brac) domain. In rat, over-expression of this gene in vascular smooth muscle cells induced cellular hypertrophy. In rat, the C-terminus of RCBTB1 interacts with the angiotensin II receptor-1A. In humans, this gene maps to a region of chromosome 13q that is frequently deleted in B-cell



chronic lymphocytic leukemia and other lymphoid malignancies. [provided by RefSeq, Jul 2008],

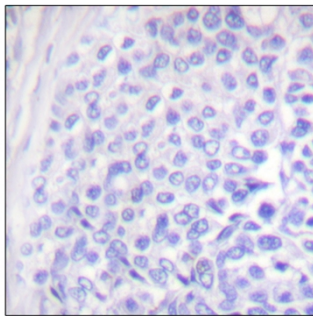
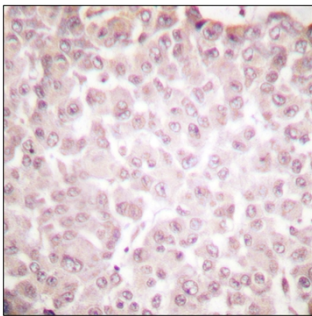
**matters needing attention**

Avoid repeated freezing and thawing!

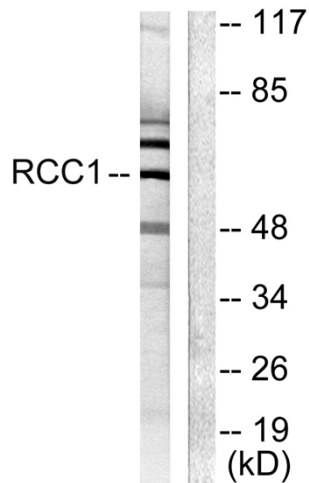
**Usage suggestions**

This product can be used in immunological reaction related experiments. For more information, please consult technical personnel.

**Products Images**



Immunohistochemistry analysis of paraffin-embedded human breast carcinoma tissue, using RCBTB1 Antibody. The picture on the right is blocked with the synthesized peptide.



Western blot analysis of lysates from LOVO cells, using RCBTB1 Antibody. The lane on the right is blocked with the synthesized peptide.